

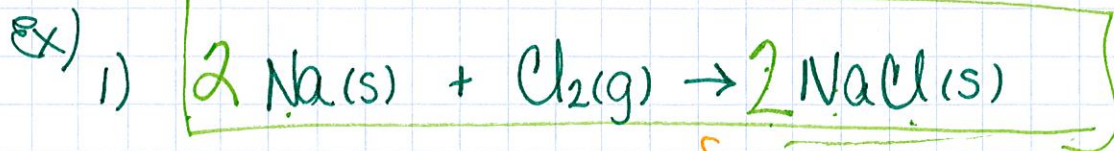
Balancing Chemical Equations

- obey the Law of Conservation of Mass

mass cannot be created or destroyed in chemical reaction

- use coefficients to balance

↳ # in front of a compound
is multiplied to every element in the compound



Na 1 2

Cl 2

Na 1 2

Cl 1 2

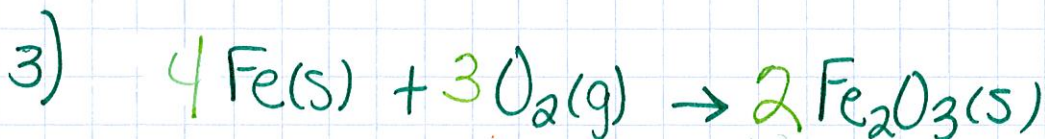


N 2

H 2 6

N 1 2

H 3 6



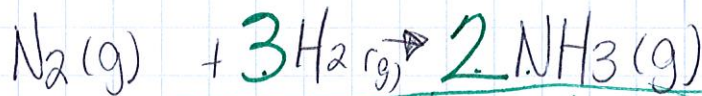
Fe 1 4

O 2 6

Fe 2 4

O 3 6

3.



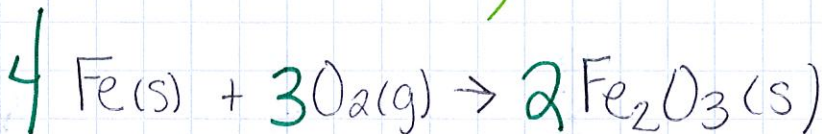
N 2

H 6

N 2

H 6

4.

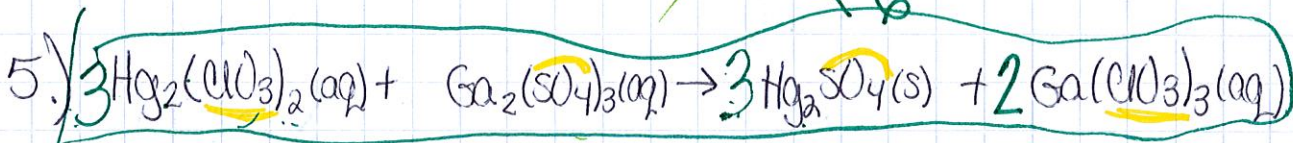


Fe 4

O 6

Fe 4

O 6

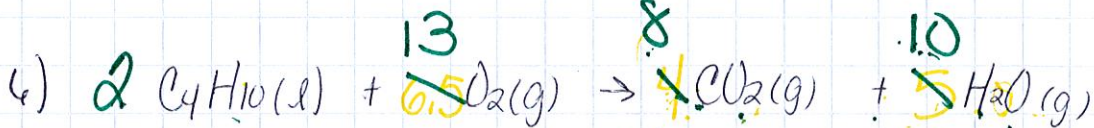


Hg 6 Ga 2

ClO₃ 6 SO₄ 3

Hg 6

Ga 2

ClO₃ 6SO₄ 3

C 8

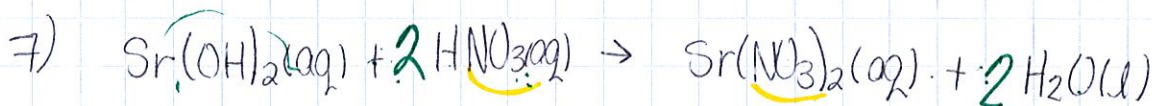
H 20

O 26

C 8

H 20

O 26



Sr 1

O 8

H 4

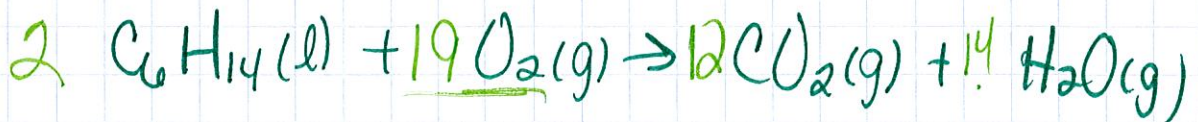
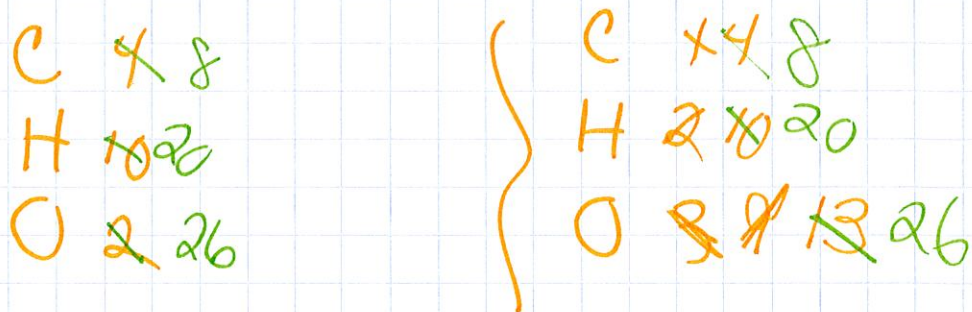
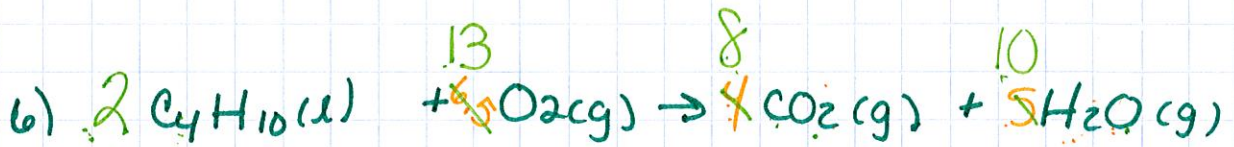
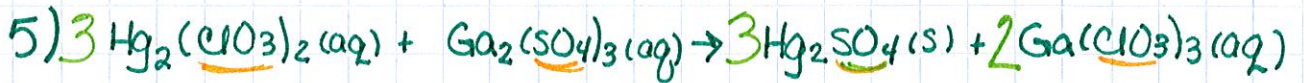
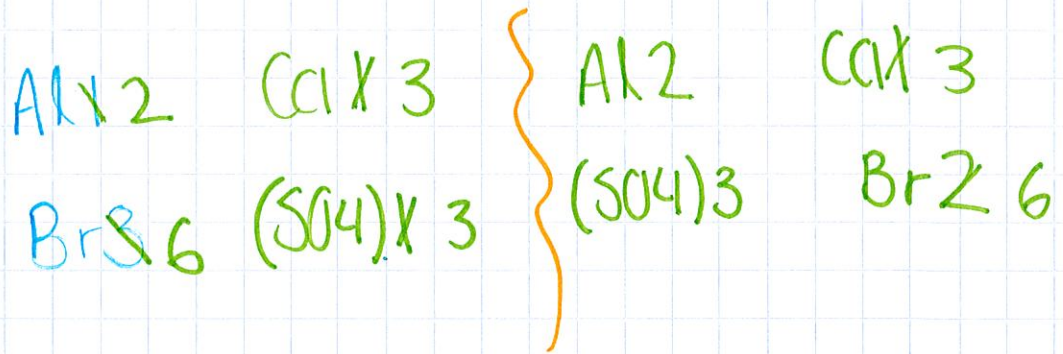
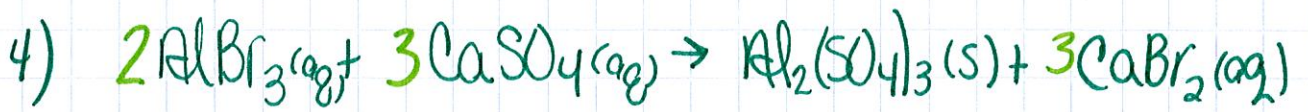
N 2

Sr 1

O 8

H 4

N 2



$$\frac{2 \times 19}{2} = 19$$

$$24 + 14 = 38$$